

CK ULTRA LOW RANGE PRESSURE DIFFERENCE SWITCHES

Ultra Low Range Pressure Difference Switches with User Adjustable Knob

Salient Features

Easy to See, Easy to Use!

Set Point easily user adjustable with visible scale in mbar. (no need of pressure gauge).

Light Weight!

190 gms

Flexible!

Direction of PG 9 cable entry can be rotated in steps of 120°

Long Lasting!

10⁶ switching operations

More Options!

Available in a wide range

Trusted all over!

Tested and proven

Technical Specifications

- Media - Air, non-flammable gases and non-aggressiv gases.
- Housing Material - Body of Glass filled nylon and Cover of Polycarbonate.
- Protection category - IP54 with cover.
- Maximum working pressure - 10 Kpa / 1019.74 mm wg.
- Electrical Rating - Maximum 1A/250VAC
- Electrical Connection - PCB mounted terminal strip
- Cable Entry - PG9
- Mounting Lugs - integrated in bottom Housing.
- High Pressure and Low Pressure port of Outer Diameter 6 mm.



Range Selection Table

Range Code (Orion)	Adjustment range for upper switching pressure Pa (mm wg)	Switching differential set to Pa (mm wg)
CK80	50 ~ 200 (5.099 ~ 20.395)	70 (7.139)
CK81	50 ~ 300 (5.099 ~ 30.592)	70 (7.139)
CK82	50 ~ 400 (5.099 ~ 40.789)	80 (8.159)
CK83	50 ~ 500 (5.099 ~ 50.987)	90 (9.179)
CK85	200 ~ 1000 (20.395 ~ 101.974)	100 (10.197)
CK86	500 ~ 2500 (50.987 ~ 254.935)	150 (15.296)
CK87	1000 ~ 4000 (101.974 ~ 407.896)	250 (25.494)

How to order CK series Low Range Pressure Difference Switches

Please specify the Range Code eg. CK80 or CK87

ULTRA LOW RANGE PRESSURE DIFFERENCE SWITCHES

CK

INSTALLATION AND OPERATING INSTRUCTIONS

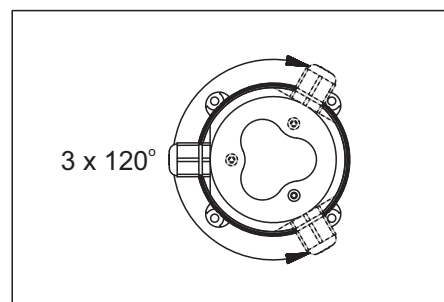
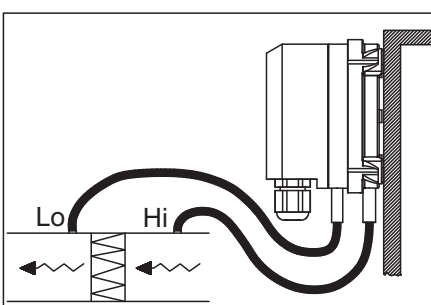
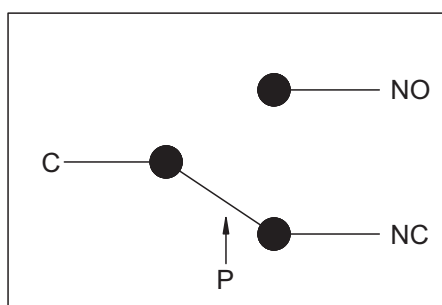
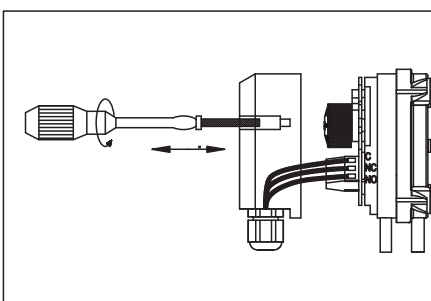
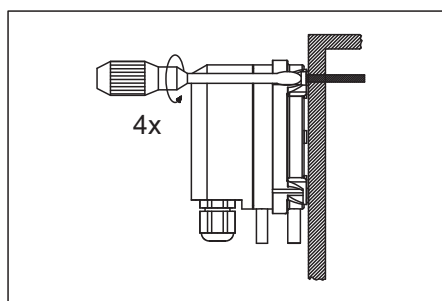
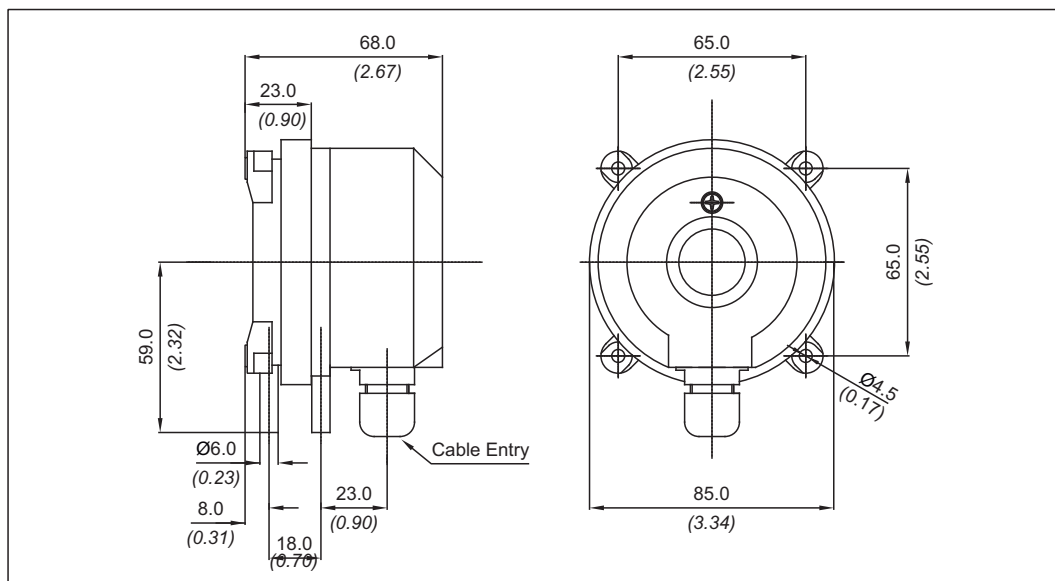
Principle of Operation

When the effective force generated by the pressure difference in the lower and upper chamber of the pressure capsule exceeds/falls beyond the balancing spring forces, an electrical element is actuated.

Mounting

The detail mounting dimensions are shown in Fig. 1

Fig. 1



P1 = higher pressure

P2 = lower pressure

*Use two screws only, for mounting

**Remove transport protection from P2

Note : Do not install upside down with trip pressure of less than 50 Pa.